



Newsletter from Business Unit Infusion Devices

insuflon™ has been around for more than 20 years. The product was initially developed by doctors at the Uddevalla Hospital in Sweden with the purpose of minimizing the pain when injecting insulin. insuflon™ is part of the Unomedical infusion Device product range.

What is insuflon™

insuflon™ is a so-called injection port through which subcutaneous injection is made with a syringe or a pen. insuflon™ consists of a soft catheter, usually inserted in the abdomen or buttocks, and a chamber closed by a membrane through which injection of a drug is made with a syringe or a pen.

What is insuflon™ used for?

insuflon™ saves patients from the pain of multiple daily injections. In other words, insuflon™ reduces the pain for patients who inject themselves many times a day - insuflon™ remains in the skin for up to three days, hence only one prick every three days.

insuflon™ has been safely documented with insulin products. Other drugs have not been tested for compatibility with insuflon™.

Who could benefit from using insuflon™?

Our experience shows that especially the following types of patients could benefit from using insuflon™:

- Children that are afraid of needles (needle phobia)
- Patients that are afraid of injection pain
- Patients starting an insulin treatment
- Patients that permanently need multiple daily injections, and are afraid of needles

What are the benefits of using insuflon™?

Generally there is a much better compliance for patients that are afraid of needles. In case of diabetes patients, we can see an improved blood glucose control or in other words a better control of the patient's blood glucose level. This is crucial long term as it delays the onset and development of serious and adverse complications in diabetic patients.

A recent study carried out by the renowned Barbara Davis Center for Childhood Diabetes in Colorado, USA, was concluded





this way by Dr Chase: "The study demonstrated that by using a simple device as the insuflon™ injection port, the children accepted the daily injections. As a result the compliance increased and glycemic control was improved".

A copy of a press release published by Unomedical on the Barbara Davis Center study is attached to this Newsletter for your information.

insuflon™ - the product

insuflon™ is available from Unomedical. Below we have listed some relevant information on the product:

- insuflon™ comes in boxes of 10 pieces
- A new and more attractive box design
- Minimum order is 1,000 pieces per order
- IFU (Instructions For Use) in 14 languages is included in each box
- Product Data Sheet is available in English
- Promotion material is available in English

How is insuflon™ used?

insuflon™ is simple and easy to use. Each box contains an IFU (Instructions for Use), with simple pictures to guide the patient through an easy and effortless insertion.

How long can insuflon™ be used?

insuflon™ is recommended used for up to three days after which it has to be changed and a new inserted at a different location on the abdomen or buttocks. Keeping insuflon in place longer than recommended increases the risk of irritation and may reduce the insulin absorption.

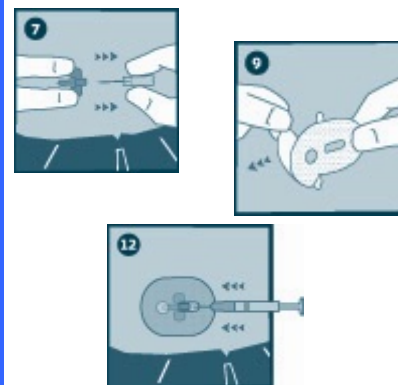
If you have questions related to insuflon™, please contact Kjeld Aabye by e-mail: kah@unomedical.com or by phone at +45 4642 7844.

Christmas vacation

Please be informed that the sales office at Unomedical, Infusion Devices, will be closed for Christmas from Saturday 23 December to Monday 1 January, both days inclusive. During this period, we will not be shipping any orders out of Denmark or Mexico / USA.



insuflon™ product data sheet



Pictures from the insuflon™ IFU